

DAS BEHEIM

Beheimgasse 45 in 1170 Wien

TOP 2.10 | 1. OG

WOHNFLÄCHE: 30.24 m²

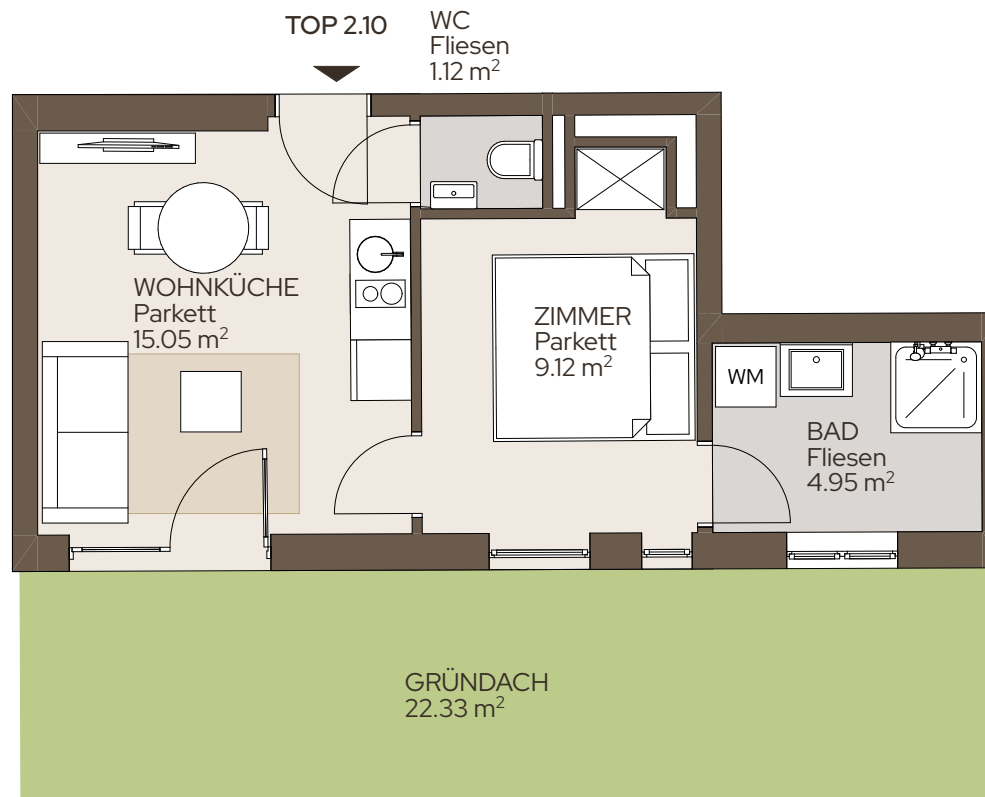
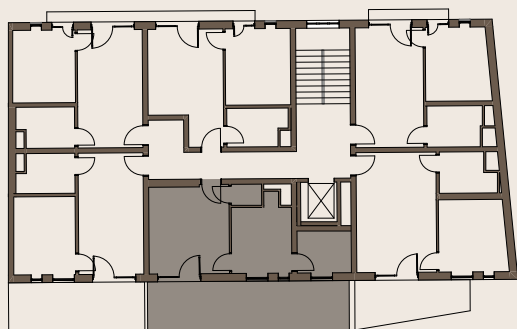
GRÜNDACH: 22.33 m²

WOHNKÜCHE 15.05 m²

ZIMMER 9.12 m²

BAD 4.95 m²

WC 1.12 m²



**WOHN
SALON**

www.wohn-salon.at

T: 01 934 65 99

M: office@wohn-salon.at

A4 | M 1:75

