

DAS BEHEIM

Beheimgasse 45 in 1170 Wien

TOP 2.27 | 1. DG

WOHNFLÄCHE: 69.20 m²

BALKON: 7.31 m²

WOHNKÜCHE 34.10 m²

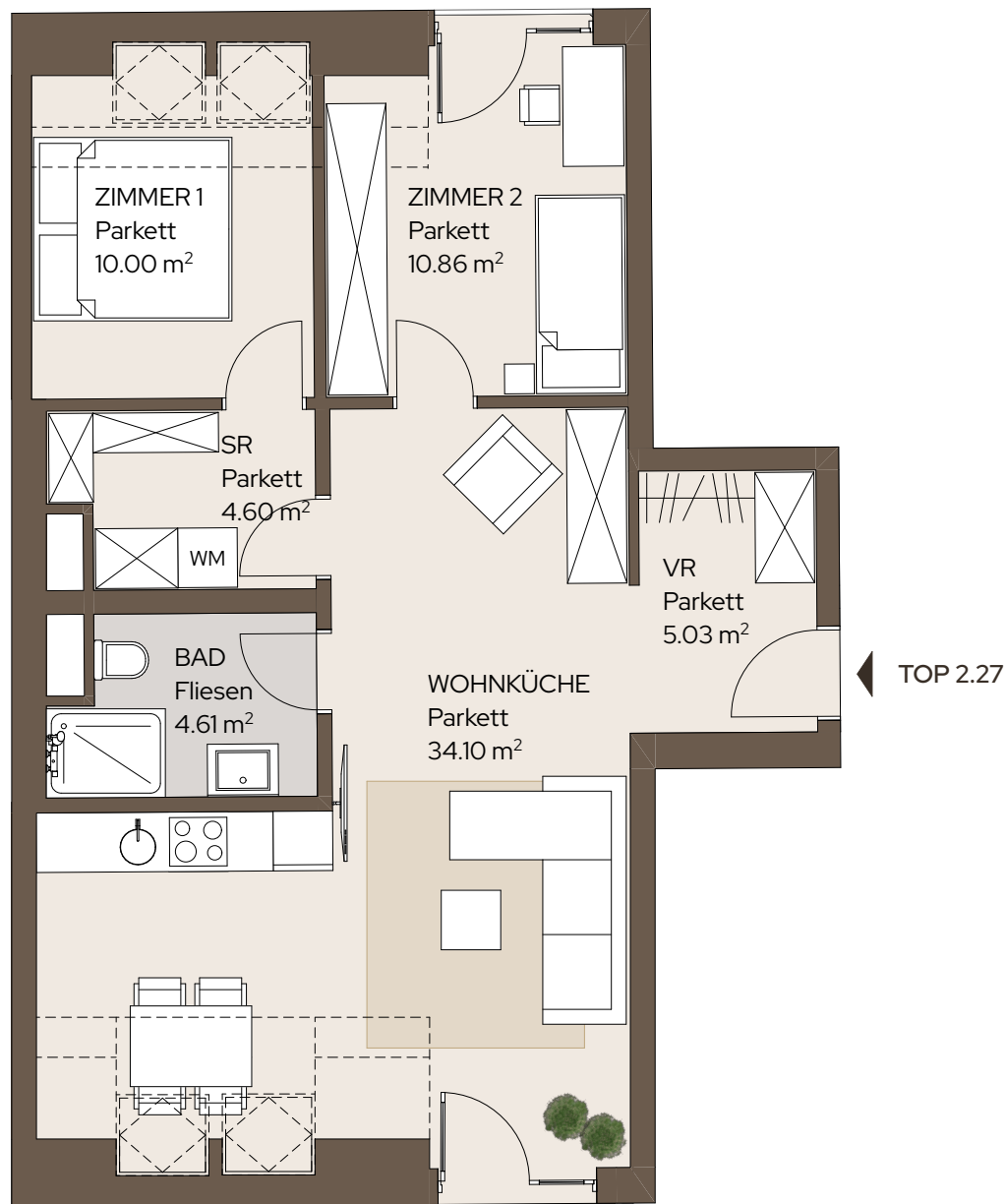
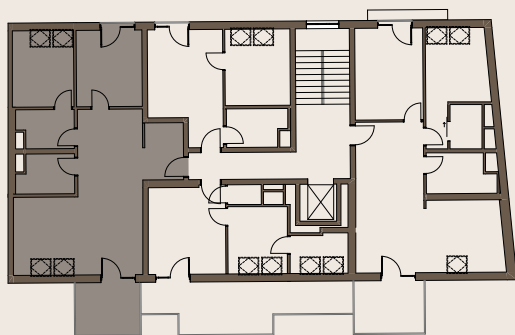
ZIMMER 1 10.00 m²

ZIMMER 2 10.86 m²

BAD 4.61 m²

VORRAUM 5.03 m²

SCHRANKRAUM 4.60 m²



www.wohn-salon.at
T: 01 934 65 99
M: office@wohn-salon.at

A4 | M 1:75

